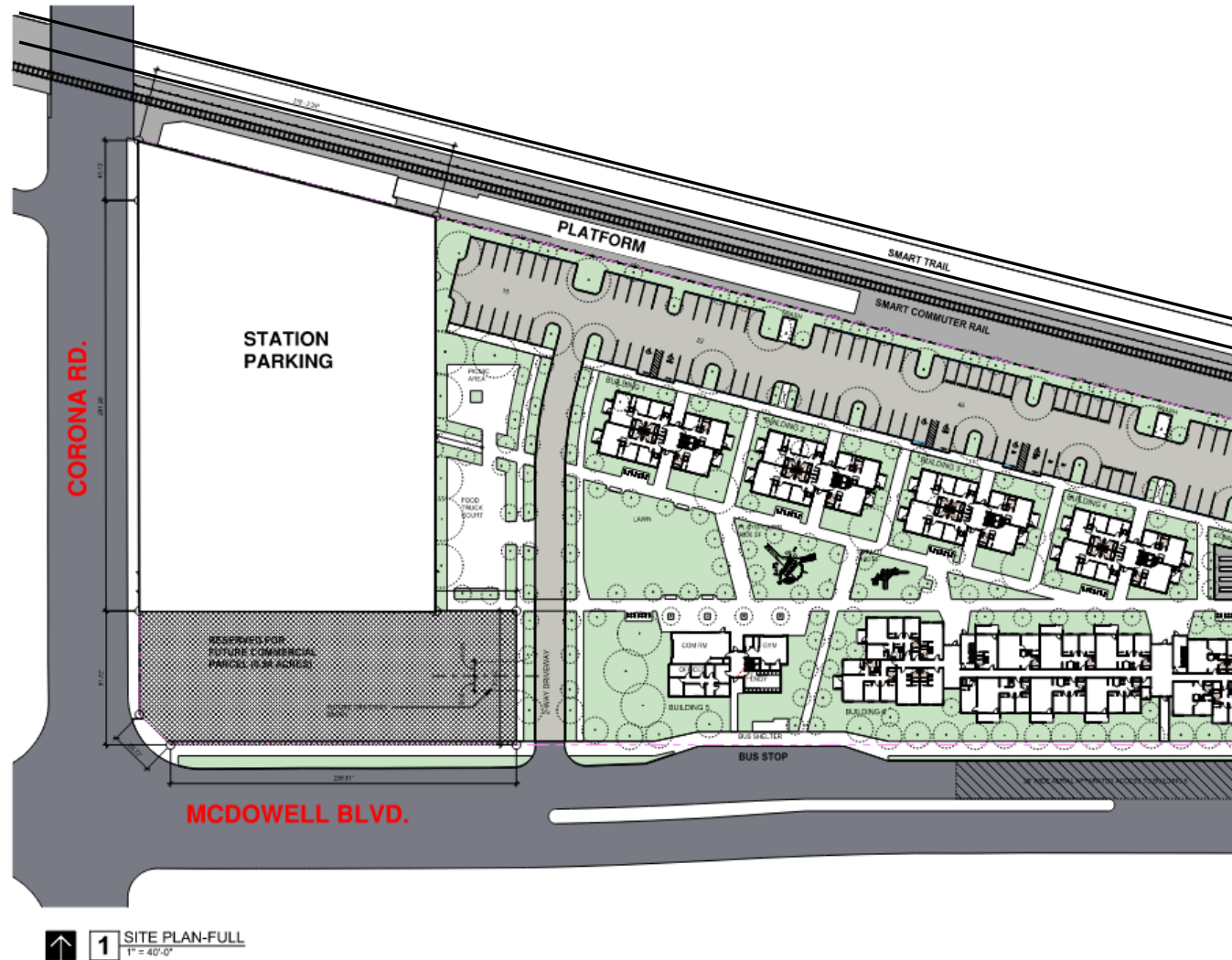


Upcoming SMART Work in Petaluma

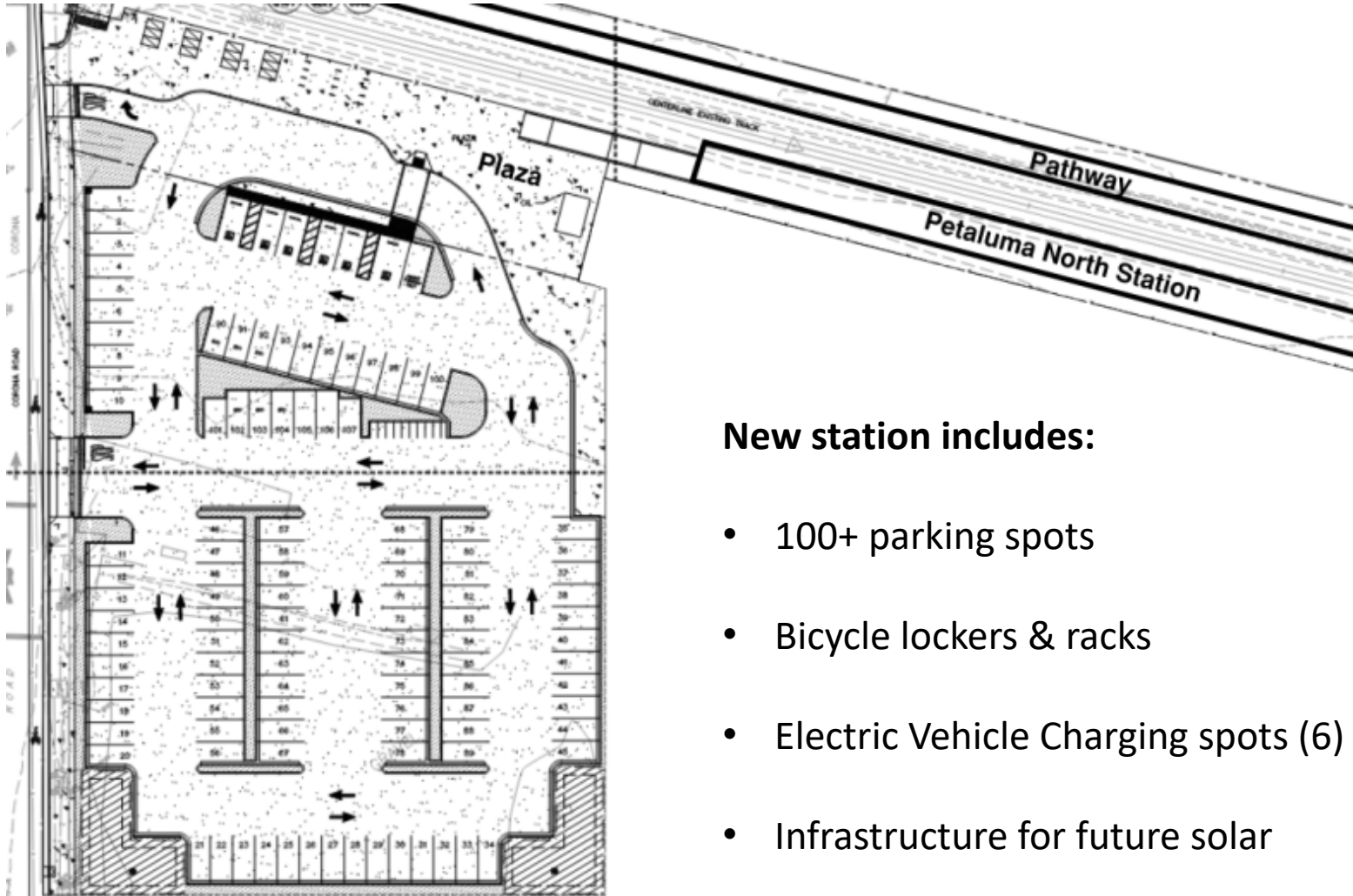
- **3 Improvements coming for Petaluma-McDowell-Corona**
 - » Petaluma North Station at Corona Rd.
 - » Pathway – Southpoint Blvd. to Main St. (2.9 miles)
 - » North McDowell Blvd Improvements – Crosswalk & Reconstruction



PETALUMA NORTH STATION & MERIDIAN AT CORONA RD DEVELOPMENT



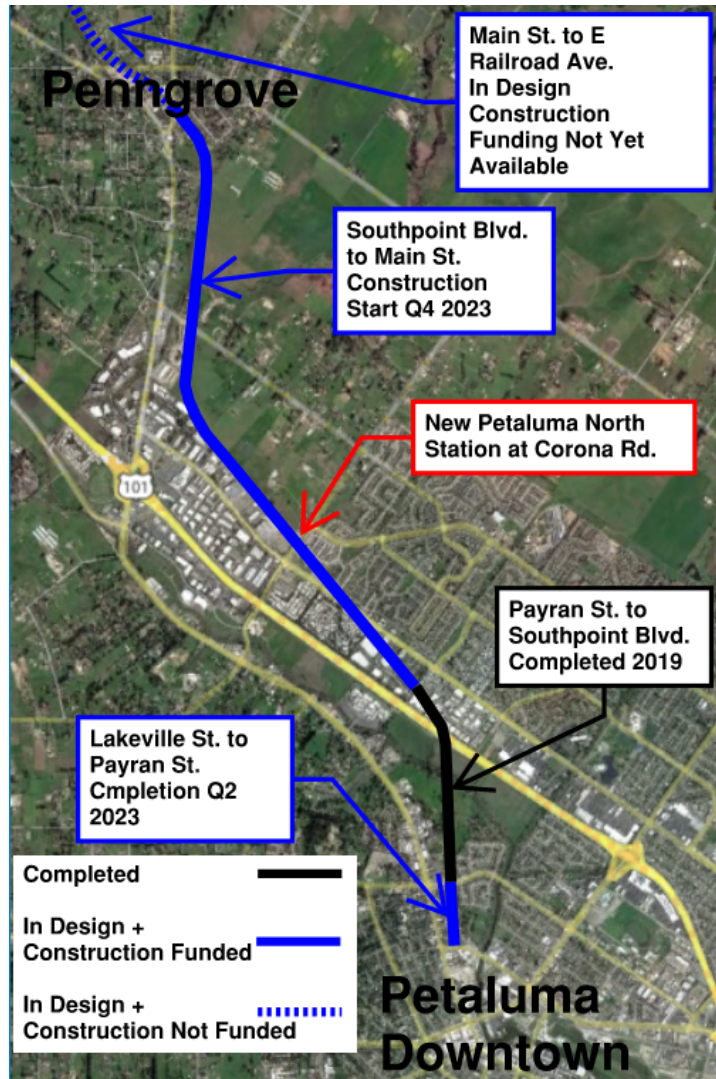
STATION & PARKING



New station includes:

- 100+ parking spots
- Bicycle lockers & racks
- Electric Vehicle Charging spots (6)
- Infrastructure for future solar

PATH GEOGRAPHY

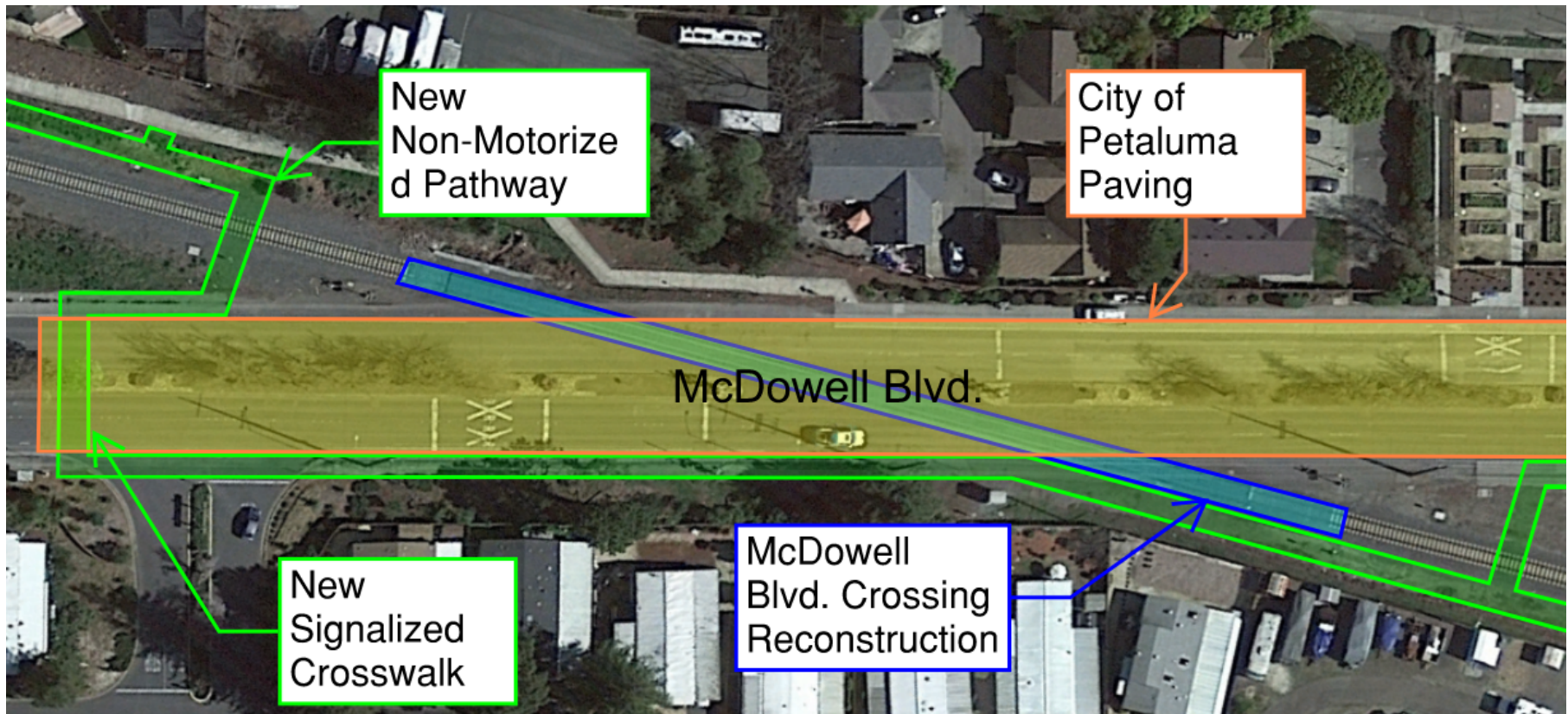


NON-MOTORIZED PATHWAY



Upon completion of the Southpoint Blvd. to Main St. path there will be continuous path from Lakeville St. in Petaluma to Main St. in Pennngrove (4.3 miles)

MCDOWELL BLVD. CROSSING IMPROVEMENTS



SCHEDULE

	Q1 2023	Q2 2023	Q3 2023	Q4 2023	Q1 2024	Q2 2024	Q3 2024	Q4 2024	Q1 2025
Design									
Contract Out for Bid									
Contract Award									
Construction									
Station Completion									
Procurement of Long Lead Items									

Some vital project equipment has a long lead time for manufacturing of 1-year